



Architecture & Decorative

- Woven Wire Mesh
- Expanded Metal
- Wedge Screen





Stainless Steel Mesh

Stainless steel woven wire mesh also varies from being fine, soft and flexible as silk to as rigid as steel plate. This wire diameter and mesh with ratio reasonable, therefore weave structure is very strong. After 13 whole weaving process, so that the mesh surface flatness better.

Size & Configurations

- Mesh up to 300mesh
- Wire diameter from 0.035mm to 0.50mm
- Roll size include 1m*30m, 1.2m*30m, 1.5m*30m and 2.0m*30m

Material

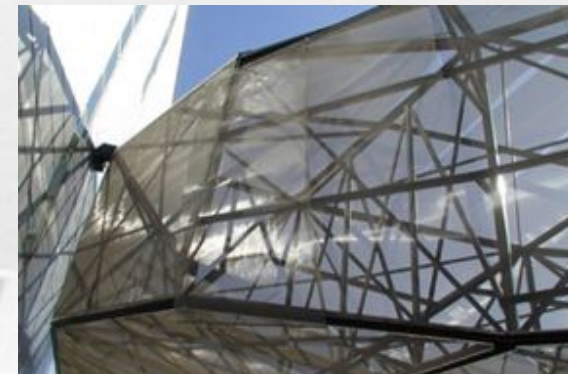
- Stainless steel

Feature

- Good air permeability and light-admitting quality.
- High strength and strong toughness
- Fire protection and high temperature resistance
- Bright and beautiful mesh surface

Applications

- Window Screen
- Sunshade
- Partition
- Facades
- Ceiling
- Lighting





Copper Wire Mesh

The tensile properties of brass mesh is higher than those of copper with some sacrifice in formability. It is often used for decoration due to its bright gold-like appearance.

The brass wire cloth can be used to make decorative screens for a variety of applications. It is for radiator cabinets, loudspeakers, air conditioning or other products requiring a screen for decorative purposes.

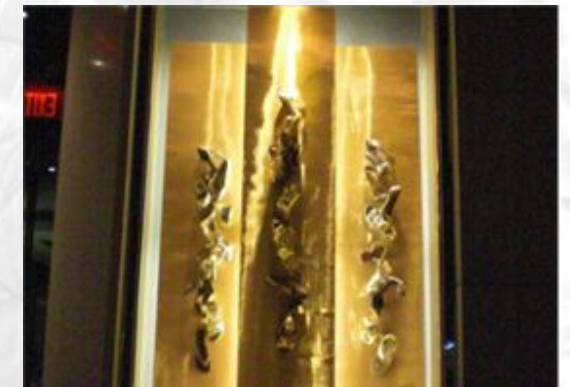


Size & Configurations

- Mesh up to 180mesh
- Wire diameter from 0.05mm to 0.70mm
- Roll size include 1m*30m, 1.2m*30m, 1.5m*30m and 2.0m*30m

Material

- Pure Copper
- Brass Copper
- Phosphor Bronze



Feature

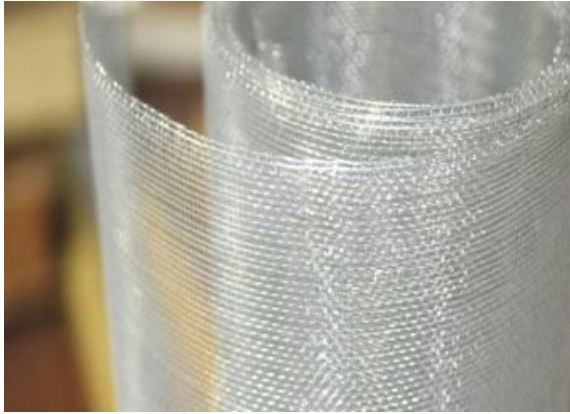
- Good resistance to corrosion
- Good air permeability and light-admitting quality.
- Bright and beautiful mesh surface
- Resists abrasion, cleans easily.



Applications

- Window Screen
- Partition
- Facades
- Lighting





Aluminum Wire Mesh

The aluminum mesh can be used as insect screen which is the most popular material used for window or door screening mesh, and screen enclosures against bugs and insects in hotel, restaurant, building and residential houses.

This screen is available in natural aluminum color or black and brown color coated with corrosive resistant paint.

Size & Configurations

- Mesh up to 40mesh
- Wire diameter from 0.17mm to 0.50mm
- Roll size include 1m*30m, 1.2m*30m and 1.5m*30m

Material

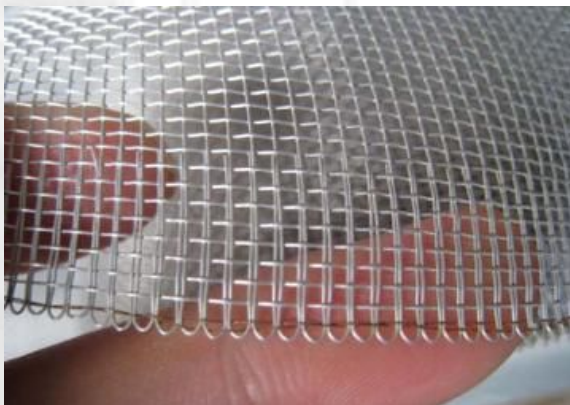
- Aluminum
- Aluminum alloy

Feature

- Water and air permeable
- Lightweight, durable, abrasion resistant
- Helps keep out a wide range of pests and insects.
- Reduces the need for chemical pesticide applications.
- Designed to give improved ventilation.
- Minimum shading of the room

Applications

- Fly Screen
- Facades





Crimped Wire Mesh

Crimped wire mesh is woven using wire crimped prior to weaving. The crimps are made at the points the weft and warp wires intersect which secures the wire, thereby stabilizing the wire cloth and preventing the wire from moving. It is a new decorative material in the modern architecture industry

Size & Configurations

- Wire diameter typically range from 0.55mm to 5.0mm
- Hole size up to 100mm
- Weave type include plain crimped, single & double intermediate, lock crimped, flat top and slot hole crimped

Material

- Stainless steel
- Carbon steel
- Copper
- Aluminum

Feature

- Diversity of sizes and meshes
- Versatility and unique texture
- Variety of color, durability and flexibility
- Ventilation, lighting and visibility

Applications

- Fence
- Sunshade
- Facades
- Office Furniture
- Ceiling
- Interior partitions





Expanded Metal Mesh

Expanded metal is a metal sheet with openings in the area. They are formed by cuts in the transverse direction and at the same time stretching in length without loss of material. Because of the unique three-dimensional structure of expanded metal, it can be used for architecture projects

Size & Configurations

- Plate thickness from 0.3mm to 6.0mm
- Shape include diamond hole and hexagonal hole

Material

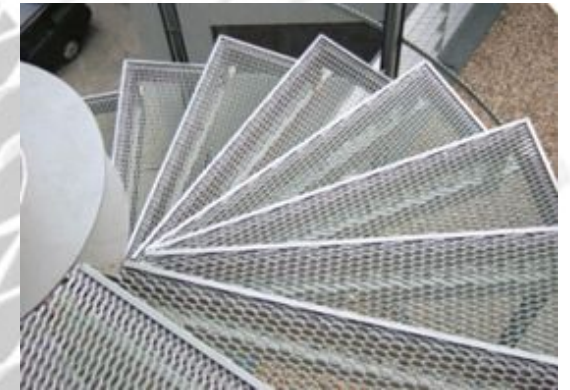
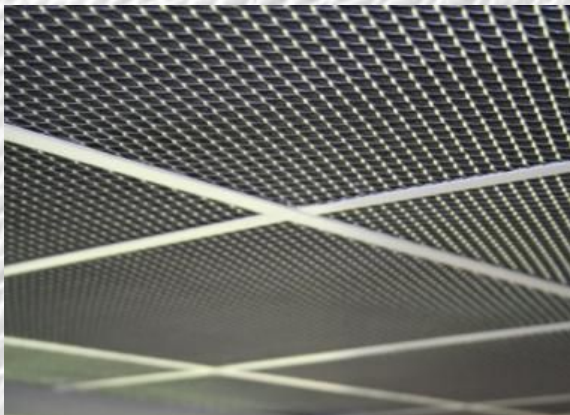
- Stainless steel
- Copper
- Aluminum

Feature

- High utilization, anti-slip
- Light weight, high load-carrying capacity
- Firm in structure and beautiful appearance
- Allows the free passage of air, light, heat and sound

Applications

- Security fence
- Facades
- Sunshade
- Ceiling
- Curtain wall
- Stair treads
- Office furniture
- Lamp design





Perforated Metal Mesh

As its noticeable and beautiful appearance, perforated metal is used in the field of architectural decoration, such as doors and windows, elevator, ceiling, wall panels, stairs, balconies, building exterior decoration and so on.

Size & Configurations

- Plate thickness from 0.3 to 6.0mm
- Shape include round hole, square hole, slot hole, triangle hole and hexagonal hole

Material

- Stainless steel
- Carbon steel
- Aluminum
- Copper

Feature

- Strong corrosion resistance, easy to clean
- Wear resistance, high tensile strength, tolerance capacity.
- Holes and rows are evenly placed in accurate position

Applications

- Security fence
- Facades
- Sunshade
- Ceiling
- Curtain wall
- Stair treads
- Office furniture
- Lamp design





Flat Wedge Screen

Slot flat wedge wire screens are manufactured by helically wrapping parallel support rods with a continuous "V" shaped wire, then be made to panel screen through cutting and edge welding. The wedge screen panel size can be changeable as need.

Size & Configurations

- Slot opening up to 10mm
- Wire include triangle wire, Round Rod, Flat Bar and wedge wire

Material

- Stainless Steel

Feature

- High strength,rigidity and load capacity
- Wear and corrosion resistance
- Accuracy and design flexibility
- More stylish, modern appearance

Applications

- Tree grating to protect the bases of trees
- Security fence
- Facades
- Curtain wall
- Stair Treads
- Office Furniture
- Drainage grates
- Sidewalk



Wedge Screen Tube



Wedge wire tube also called Wedge wire screen cylinder. It's manufactured by wrapping and welding stainless steel V-shaped profile wire cylindrically around support rods under automatic specialized wedge wire screen machine. Each profile wire and support rod is contacted by resistance welding.



Size & Configurations

- Slot opening up to 10mm
- Pipe diameter typically range from 1" to 60"
- Wire include triangle wire, Round Rod, Flat Bar and wedge wire

Material

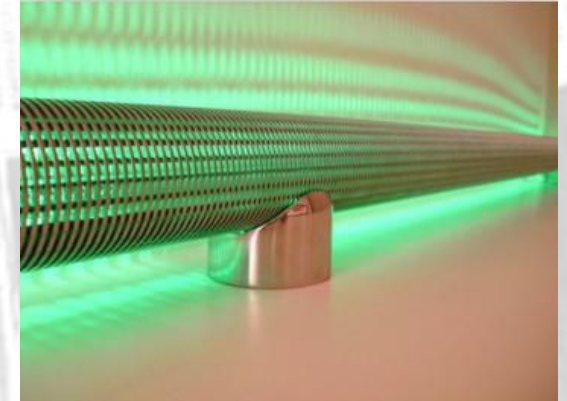
- Stainless Steel

Feature

- Firm in structure
- High strength
- Rigidity and load capacity
- Bright luster, very practical and beautiful

Applications

- Lamp Design
- Lighting cover
- Customized lighting equipment



Expanded, Wedge & Wire Products

for Architecture & Decorative



Factory in AP

Head

Web Wire Mesh CO.,Ltd.

NO 12 The East Zone Development Industry

Hebei, China

Tel: +86 0318 7568801

Fax: +86 0318 7568802

E-mail: zhao@webwirecloth.com

Internet: www.webwirecloth.com

Branch

Web Wire Mesh CO.,Ltd.---SJZ Branch

NO 2701 CYC Shijiazhuang City

Hebei, China

Tel: +86 0311 89255081

Fax: +86 0311 89255081

E-mail: zhao@webwirecloth.com

Internet: www.webwirecloth.com