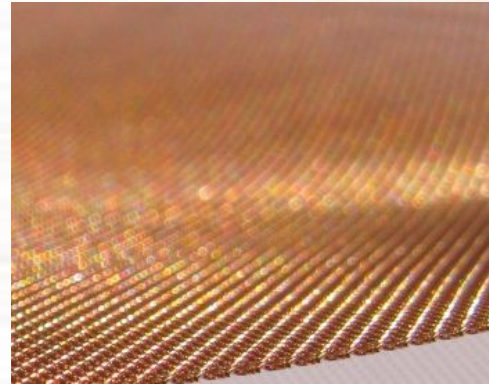




WIRE MESH
WEB WIRE MESH CO.,LTD

Phosphor Bronze Wire Mesh



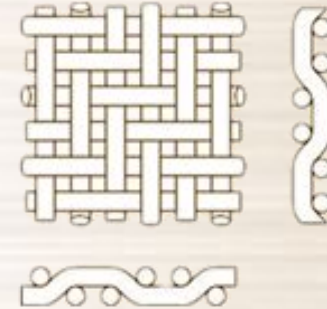
Twill Weave

Phosphor Bronze Wire Mesh

Twill Weave

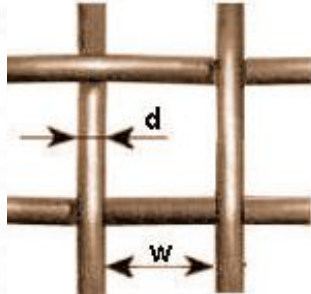
Twill Weave

Twill weave is made with each weft wire passing alternately over two, and then under two successive warp wires and each warp wire passing alternately over two and under two successive weft wires.



Opening (w)

Clear opening between adjacent parallel wires; not affected by diameter of the wire.



Wire diameter (d)

Opening area (A)

The percentage of the opening is calculated as follows

$$A = \left(\frac{w}{w+d} \right)^2 \times 100\%$$

Mesh

Number of openings in a linear inch measured from the center of one wire to a point 1" distant.

$$\text{Mesh} = \frac{25.4 \text{ mm}}{w \text{ (mm)} + d \text{ (mm)}}$$



Phosphor Bronze Wire Mesh Twill Weave

Mesh	Wire		Aperture		Open Area		Weight	
	mm	inch	mm	inch	%	mm ²	kgs/m ²	lbs/m ²
40	0.30	0.0118	0.335	0.0131	27.83	0.1122	2.03	4.47
	0.27	0.0106	0.365	0.0143	33.03	0.1332	1.64	3.62
	0.25	0.0098	0.385	0.0151	36.75	0.1482	1.41	3.11
	0.23	0.0090	0.405	0.0159	40.67	0.1640	1.19	2.63
	0.21	0.0082	0.425	0.0167	44.79	0.1806	0.99	2.19
	0.19	0.0074	0.445	0.0175	49.11	0.1980	0.81	1.79
	0.17	0.0066	0.465	0.0183	53.62	0.2162	0.64	1.44
	0.15	0.0059	0.485	0.0190	58.33	0.2352	0.51	1.12
50	0.25	0.0098	0.258	0.0101	25.79	0.0665	1.76	3.88
	0.23	0.0090	0.278	0.0109	29.94	0.0772	1.49	3.29
	0.21	0.0082	0.298	0.0117	34.41	0.0888	1.24	2.74
	0.19	0.0074	0.318	0.0125	39.18	0.1011	1.02	2.24
	0.18	0.0070	0.328	0.0129	41.68	0.1075	0.92	2.01
	0.17	0.0066	0.338	0.0133	44.26	0.1142	0.81	1.80
	0.15	0.0059	0.358	0.0140	49.66	0.1281	0.63	1.40
60	0.23	0.0090	0.193	0.0076	20.85	0.0373	1.79	3.95
	0.21	0.0082	0.213	0.0083	25.39	0.0455	1.49	3.29
	0.19	0.0074	0.233	0.0091	30.38	0.0544	1.22	2.69

Phosphor Bronze Wire Mesh Twill Weave

Mesh	Wire		Aperture		Open Area		Weight	
	mm	inch	mm	inch	%	mm ²	kgs/m ²	lbs/m ²
60	0.17	0.0066	0.253	0.0099	35.81	0.0641	0.97	2.16
	0.15	0.0059	0.273	0.0107	41.68	0.0747	0.76	1.68
	0.13	0.0051	0.293	0.0115	48.01	0.0860	0.57	1.26
	0.12	0.0047	0.303	0.0119	51.34	0.0920	0.49	1.07
80	0.15	0.0059	0.167	0.0065	27.83	0.0280	1.46	3.22
	0.18	0.0070	0.137	0.0054	18.75	0.0189	1.02	2.24
	0.13	0.0051	0.187	0.0073	34.87	0.0351	0.76	1.68
	0.12	0.0047	0.197	0.0077	38.69	0.0390	0.64	1.43
	0.10	0.0039	0.217	0.0085	46.92	0.0473	0.45	0.99
100	0.10	0.0039	0.154	0.0060	36.75	0.0237	0.57	1.24
	0.14	0.0055	0.114	0.0044	20.14	0.0129	0.81	1.79
	0.12	0.0047	0.134	0.0052	27.83	0.0179	1.11	2.44
120	0.12	0.0047	0.091	0.0036	18.75	0.0084	0.97	2.15
	0.1	0.0039	0.111	0.0043	27.83	0.0124	0.68	1.49
	0.09	0.0035	0.121	0.0047	33.03	0.0148	0.54	1.21
	0.08	0.0031	0.131	0.0051	38.69	0.0173	0.43	0.95
150	0.06	0.0023	0.109	0.0043	41.68	0.0119	0.31	0.67
	0.08	0.0031	0.089	0.0035	27.83	0.0079	0.41	0.91

Phosphor Bronze Wire Mesh Twill Weave

Mesh	Wire		Aperture		Open Area		Weight	
	mm	inch	mm	inch	%	mm ²	kgs/m ²	lbs/m ²
150	0.07	0.0027	0.0993	0.0039	34.41	0.0098	0.54	1.19
180	0.06	0.0023	0.0811	0.0031	33.03	0.0065	0.36	0.81
	0.05	0.0019	0.091	0.0035	41.68	0.0083	0.25	0.56
200	0.05	0.0019	0.077	0.0030	36.75	0.0059	0.28	0.62
	0.06	0.0024	0.067	0.0026	27.83	0.0045	0.41	0.89
250	0.05	0.0020	0.052	0.0020	25.79	0.0027	0.35	0.78
	0.04	0.0015	0.061	0.0024	36.75	0.0037	0.23	0.50
300	0.04	0.0015	0.044	0.0017	27.83	0.0019	0.27	0.60
325	0.035	0.0013	0.043	0.0016	30.48	0.0018	0.22	0.49
	0.04	0.0015	0.0382	0.00150	23.83	0.0014	0.29	0.65
400	0.030	0.0011	0.033	0.0013	27.83	0.0011	0.20	0.45

Phosphor Bronze Wire Mesh Twill Weave



Factory in AP

Head

Web Wire Mesh CO.,Ltd.

NO 12 The East Zone Development Industry
Hebei, China

Tel: +86 0318 7568801

Fax: +86 0318 7568802

E-mail: zhao@webwirecloth.com

Internet: www.webwirecloth.com

Branch

Web Wire Mesh CO.,Ltd.---SJZ Branch

NO 2701 CYC Shijiazhuang City
Hebei, China

Tel: +86 0311 89255081

Fax: +86 0311 89255081

E-mail: zhao@webwirecloth.com

Internet: www.webwirecloth.com