



WIRE MESH
WEB WIRE MESH CO.,LTD

Filter Tube

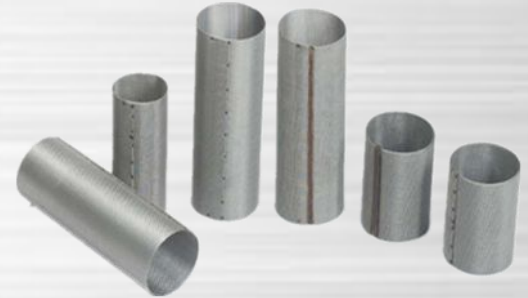
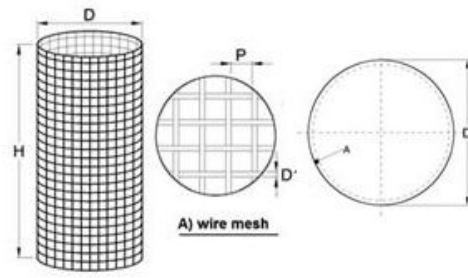


**Woven Mesh &
Expanded Metal &
Perforated Metal Type**

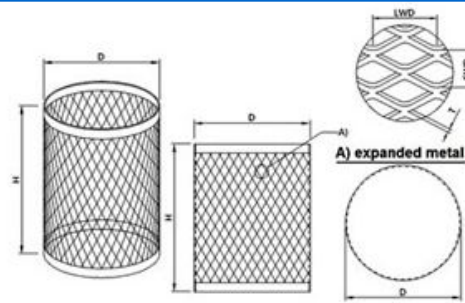
Filter Tube

Woven Mesh & Perforated & Expanded Type

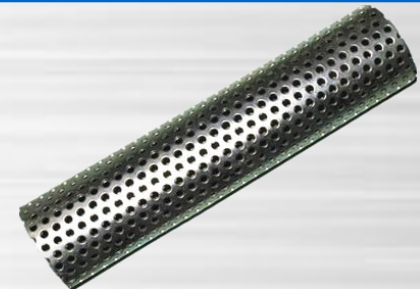
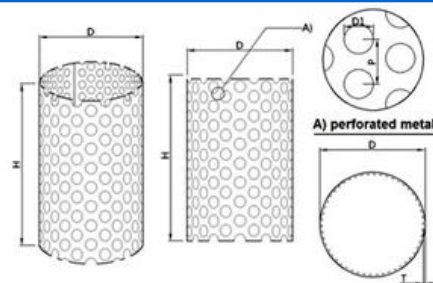
Woven Wire Mesh



Expanded Metal Mesh



Perforated Metal Mesh



Filter Tube

Woven Mesh & Perforated & Expanded Type

Size D(mm)	Length L(mm)	Layers	Form
10	10-1000	1-2	welding / sintering
20	10-1000	1-3	welding / sintering
30	10-1000	1-3	welding / sintering
50	10-1000	1-3	welding / sintering
70	10-1000	1-3	welding / sintering
100	10-1000	1-3	welding / sintering
150	10-1000	1-3	welding / sintering
180	10-1000	1-3	welding / sintering
200	10-1000	1-3	welding / sintering
220	10-1000	1-3	welding / sintering
250	10-1000	1-3	welding / sintering
280	10-1000	1-3	welding / sintering
300	10-1000	1-3	welding / sintering

Filter Tube

Woven Mesh & Perforated & Expanded Type



Factory in AP

Head

Web Wire Mesh CO.,Ltd.

NO 12 The East Zone Development Industry
Hebei, China

Tel: +86 0318 7568801

Fax: +86 0318 7568802

E-mail: zhao@webwirecloth.com

Internet: www.webwirecloth.com

Branch

Web Wire Mesh CO.,Ltd.---SJZ Branch

NO 2701 CYC Shijiazhuang City
Hebei, China

Tel: +86 0311 89255081

Fax: +86 0311 89255081

E-mail: zhao@webwirecloth.com

Internet: www.webwirecloth.com